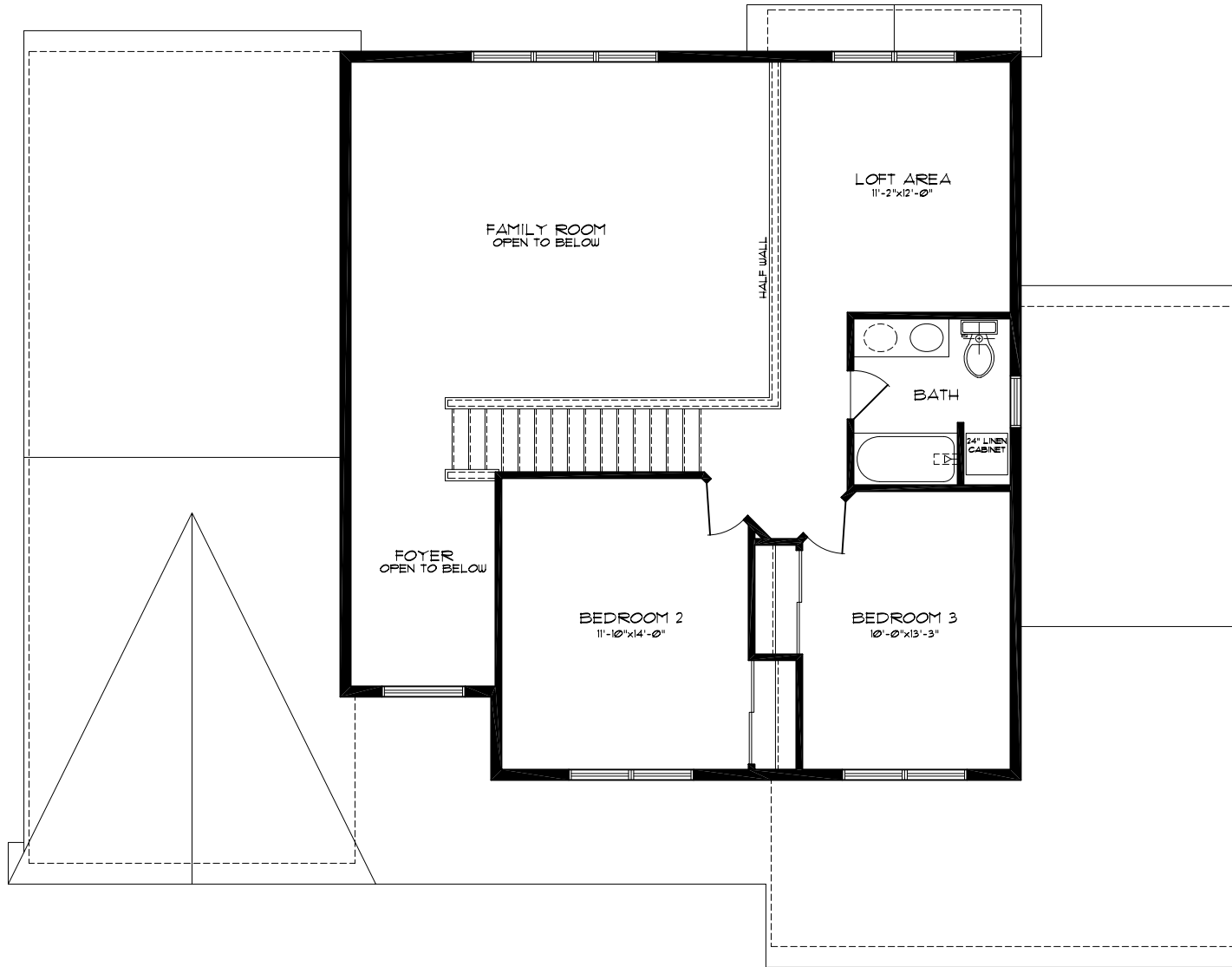


CLAREMEONT

11-16-09

1st FLOOR

$3/16" = 1'-0" @ 1/8" = 11 \times 17$
 $1/8" = 1'-0" @ 3/16" = 11 \times 11$



CLAREMEONT

2nd FLOOR

11-16-09

3/16" = 1'-0" @ 1/2x11
 1/8" = 1'-0" @ 1/2x11